

# Unit Plan

## 2BR Mid Unit 48 sqm

Typical 2 Bedroom Mid Unit  
Total Area Approx. 63.12 sqm

### Area Allocation

Living/Dining	16.29 sqm
Kitchen	6.50 sqm
Master's Bedroom	12.03 sqm
Bedroom 2	7.18 sqm
Toilet & Bath	6.00 sqm

---

**Unit Area** 48.00 sqm

Balcony	7.20 sqm
Service Area	7.92 sqm

---

**TOTAL AREA** 63.12 sqm



# Unit Plan

## 2BR Mid Unit 51 sqm

Typical 2 Bedroom Mid Unit  
Total Area Approx. 63.07 sqm

### Area Allocation

Living/Dining	17.44 sqm
Kitchen	6.50 sqm
Master's Bedroom	12.03 sqm
Bedroom 2	6.53 sqm
Toilet & Bath	16.00 sqm
Toilet & Bath 2	2.50 sqm

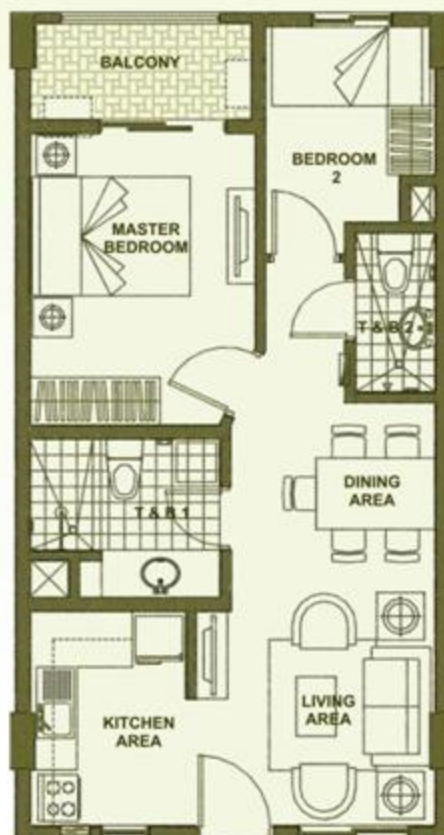
---

**Unit Area** 51.00 sqm

Balcony	4.15 sqm
Service Area	7.92 sqm

---

**TOTAL AREA** 63.07 sqm



# Unit Plan

## 3BR End Unit 80 sqm

Total Area Approx. 104.80 sqm

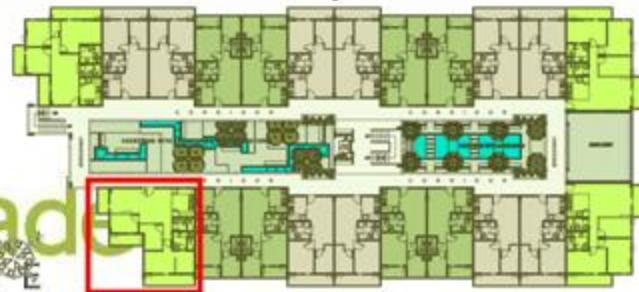
### Area Allocation

Living/Dining	27.064 sqm
Kitchen	9.126 sqm
Master's Bedroom	17.64 sqm
Bedroom 2	7.92 sqm
Bedroom 3	8.25 sqm
Toilet & Bath 1	6.00 sqm
Toilet & Bath 2	4.00 sqm

**Unit Area** 80.00 sqm

Balcony	17.50 sqm
Service Area	7.30 sqm

**TOTAL AREA** 104.80 sqm



accolade  
PLACE

# Unit Plan

## 3BR End Unit 80 sqm

Total Area Approx. 105.42 sqm

### Area Allocation

Living/Dining	22.63 sqm
Kitchen	9.03 sqm
Master's Bedroom	16.70 sqm
Bedroom 2	9.71 sqm
Bedroom 3	9.83 sqm
Toilet & Bath 1	6.00 sqm
Toilet & Bath 2	4.00 sqm

---

**Unit Area** **80.00 sqm**

Balcony	17.50 sqm
Service Area	7.92 sqm

---

**TOTAL AREA** **105.42 sqm**



accolade  
PLACE

# Unit Plan

## 3BR End Unit 80 sqm

Total Area Approx. 99.63 sqm

### Area Allocation

Living/Dining	26.15 sqm
Kitchen	7.10 sqm
Master's Bedroom	13.70 sqm
Bedroom 2	13.40 sqm
Bedroom 3	9.65 sqm
Toilet & Bath 1	6.00 sqm
Toilet & Bath 2	4.00 sqm

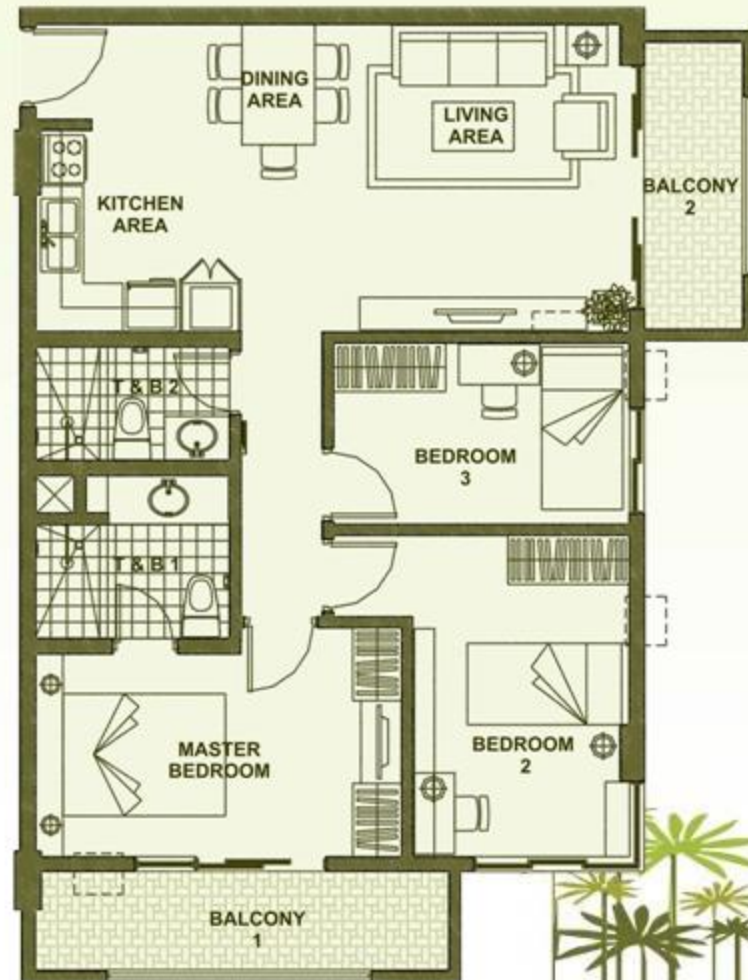
---

**Unit Area** 80.00 sqm

Balcony	12.33 sqm
Service Area	7.30 sqm

---

**TOTAL AREA** 99.63 sqm



accolade  
PLACE